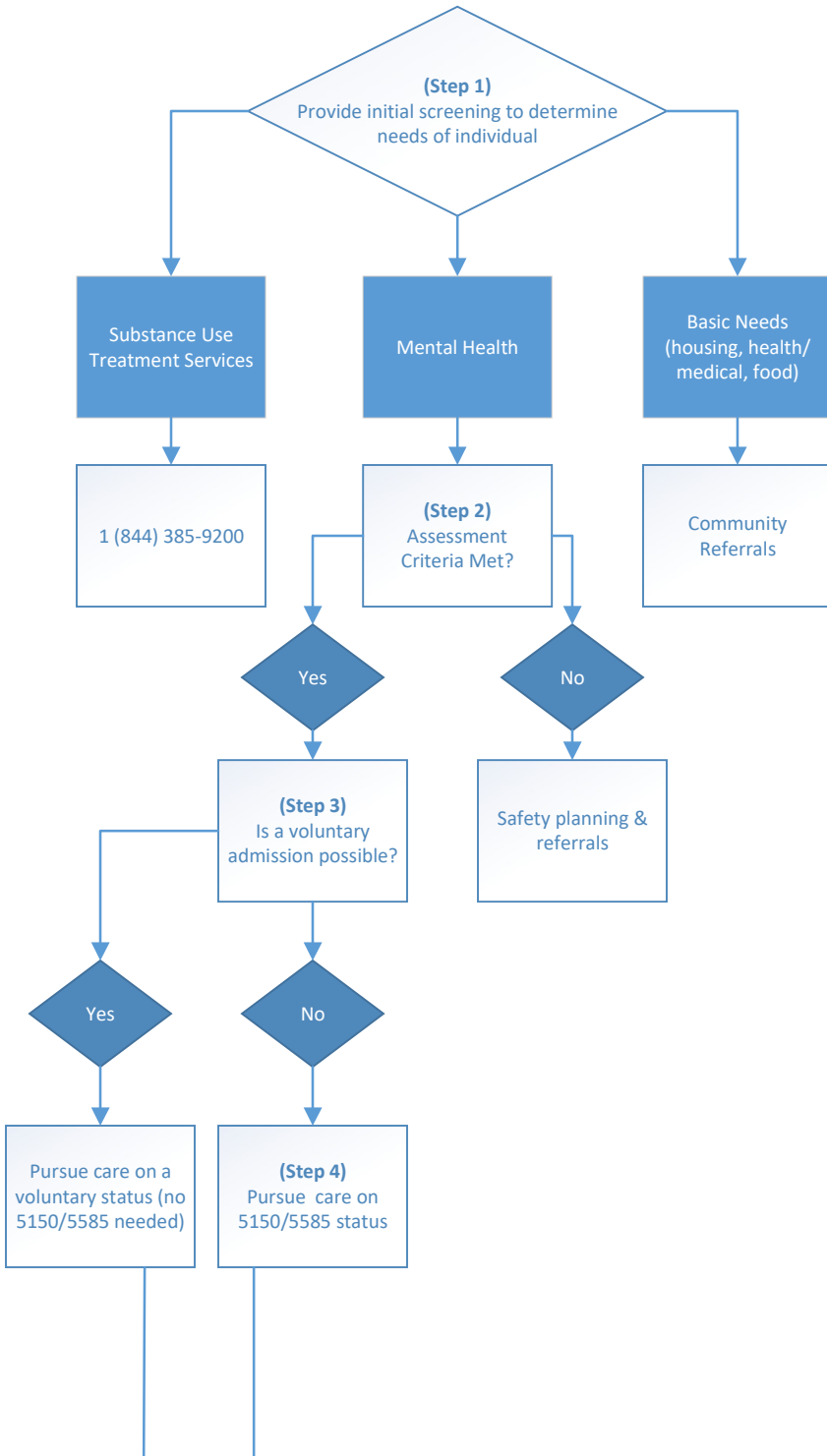


How to Help When There Has Been a Call with a Concern About an Individual



- **Step 2: Assessment:** varies case by case, many factors are considered, including but not limited to: gathering collateral and historical relevant info if available, including available supports.

At the conclusion of the assessment, the goal is to determine if **as a result of a mental health disorder**, criteria are present:

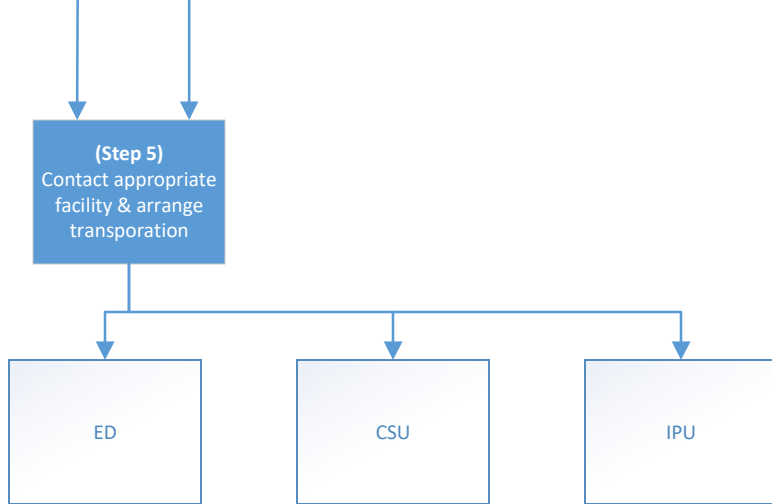
Danger to self: There is probable cause to believe that, as a result of a mental health disorder, the individual presents as a danger to themselves. Factors considered may include: observable behavior, what the individual is saying/doing, relevant history, available collateral information, evidence of a deliberate attempt to hurt themselves, a disregard for personal safety, and/or prior suicide attempts.

Danger to others: There is probable cause to believe that, as a result of a mental health disorder, the individual presents as a danger to others. The factors considered include all of those listed above (in “1. Danger to Themselves”) plus additional factors such as access to weapons; any prior history of severe aggression or violence; and/or disregard for the safety of others.

Grave disability: An adult is gravely disabled when, as a result of a mental health disorder*, he/she is unable to provide for their own food, clothing or shelter or is currently unable to take advantage of food, clothing or shelter even though it may be provided to them by another person. A minor is gravely disabled when, as a result of a mental health disorder*, is unable to use the elements of life that are essential to health, safety, and development, including food, clothing, and shelter, even though provided to the minor by others.

*Intellectual disability, epilepsy, or other developmental disabilities, alcoholism, other drug abuse, or repeated antisocial behavior do not, by themselves, constitute a mental health disorder.

- **Step 3: Voluntary:** The individual must recognize the need for treatment, willing to comply with treatment recommendations and can consent to treatment. Status of voluntary or involuntary is not an indicator of the severity of condition or need for treatment. For minors, authorization from parent or legal guardian for voluntary treatment must be available.
- **Step 4: 5150/5585:** (a) When a person, **as a result of a mental health disorder**, is a danger to others, or to himself or herself, or gravely disabled, a peace officer or professional person designated by the county **may** upon probable cause, take, or cause to be taken, person into custody for a period of up to 72 hours.



- **Step 5:**

ED: Emergency Department: Are not designated psychiatric facilities. Used for medical screening to rule out any potential medical condition which may alter behavior. Psychiatric treatment is provided in a designated psychiatric facility. In Ventura County, this is the usual first step for medical screening prior to going to inpatient unit. ED cannot demand 5150 for person on a voluntary status. **Health & Safety Code 1317(f)

CSU: Crisis Stabilization Unit: When available is a suitable first step (on a voluntary or 5150/5585 status) for further assessment up to 24 hours. For youth (age 6+), call the Seneca CSU for a possible direct admission.

IPU: Inpatient Psychiatric Unit: The appropriate level of care for an individual requiring acute care. May first require medical screening at the ED or following treatment at a CSU. Hillmont Psychiatric Center (Adults), Vista del Mar (age 12+), or an out of county designated facility. "A general acute care hospital or acute psychiatric hospital shall not require a person who voluntarily seeks care to be in custody pursuant to § 5150 of the Welfare and Institutions Code as a condition of accepting. Requirement of an involuntary hold by receiving hospitals creates an unnecessary barrier to care for patients and is a violation of the person's civil liberties." **Health & Safety Code 1317(f)

Please note the above is intended to use as a guide only. Danger to self and danger to others are not defined in the code. Each encounter is unique. Take into consideration the totality of the circumstances, including behaviors, relevant historical information, and collateral information.